

Earth Explorer Mission CFI Software GENERAL SOFTWARE USER MANUAL

Internal Code: P/SUM/DMS/01/026-006

Project Code: EE-MA-DMS-GS-0002

Issue: 3.7.2

Date: 31/07/08

	Name	Function	Signature
Prepared by:	Mariano Sánchez-Nogales	Project Engineer	
	Juan José Borrego Bote	Project Engineer	
Checked by:	José Antonio González Abeytua	Project Manager	
Approved by:	José Antonio González Abeytua	Project Manager	

DEIMOS Space S.L.
Ronda de Poniente, 19,
Edificio Fiteni VI, Portal 2, 2ª Planta, Tres Cantos
28760 Madrid, SPAIN
Tel.: +34 91 806 34 50
Fax: +34 91 806 34 51
E-mail: deimos@deimos-space.com

© DEIMOS Space S.L., 2008

Document Information

Contract Data		Classification	
Contract Number:	15583/01/NL/GS	Internal	<input type="checkbox"/>
		Public	<input type="checkbox"/>
Contract Issuer:	ESA / ESTEC	Industry	<input checked="" type="checkbox"/>
		Confidential	<input type="checkbox"/>

External Distribution		
Name	Organization	Copies

Electronic handling	
Word Processor:	Framemaker 6.0
Electronic file name:	ee-ma-dms-gs-0002-21

Document Status Log

Issue	Change Description	Date	Approval
1.0	New document	08/11/01	
2.0	Release of CFI libraries version 2.0.	29/11/02	
2.1	Release of CFI libraries version 2.1.	13/05/03	
2.2	Release of CFI libraries version 2.2.	30/09/03	
3.0	Release of CFI libraries version 3.0	21/07/04	
3.1	Release of CFI libraries version 3.1	13/10/04	
3.2	Release of CFI libraries version 3.2	15/11/04	
3.3	Release of CFI libraries version 3.3	11/07/05	
3.4	Release of CFI libraries version 3.4	18/11/05	
3.5	Release of CFI libraries version 3.5. New feautres: <ul style="list-style-type: none"> • Library optimization. • Thread-safe library • C99 compliance • First version for 64-bits machines in SOLARIS, LINUX and MACOS 	26/05/06	
3.6	Release of CFI libraries version 3.6 New feautres: <ul style="list-style-type: none"> • Header files for linking the libraries to fortran applications. Fortran examples are also provides. 	24/11/06	
3.7	Maintenance release New features: <ul style="list-style-type: none"> • Library version for MAC OS X on Intel (32 and 64-bits) 	13/07/07	
3.7.2	Maintenance release Specific new features for the libraries	31/07/08	

Table of Contents

1. SCOPE.....	9
2. ACRONYMS AND NOMENCLATURE	10
2.1. Acronyms	10
2.2. Nomenclature	10
3. APPLICABLE AND REFERENCE DOCUMENTS	11
3.1. Reference Documents	11
4. INTRODUCTION	12
5. CFI LIBRARIES OVERVIEW.....	13
6. CFI LIBRARIES INSTALLATION	18
6.1. Usage Requirements.....	18
6.1.1. Sun under Solaris 32-Bits.....	19
6.1.2. Sun under Solaris 64-Bits.....	20
6.1.3. PC under Windows 95/98/NT/2000	20
6.1.4. PC under Linux 32-Bits.....	21
6.1.5. PC under Linux 64-Bits.....	21
6.1.6. Macintosh under MacOS X 32-Bits	22
6.1.7. Macintosh under MacOS X 64-Bits	22
6.1.8. Macintosh with Intel processor under MacOS X 32-Bits	23
6.1.9. Macintosh with Intel processor under MacOS X 64-Bits	23
6.2. How to get the Software.....	24
6.3. How to install the Software.....	25
6.4. Overview of Files and Directory Structure	26
6.4.1. General Documents	26
6.4.2. Directory: cfi_name/lib	27
6.4.3. Directory: cfi_name/include	27
6.4.4. Directory: cfi_name/validation.....	27
6.4.5. Directory: cfi_name/example	27
6.5. Validation Procedure.....	28
6.6. Examples	28
6.7. Problems Reporting.....	29
7. CFI LIBRARIES USAGE	30
7.1. Using CFI's in a user application.....	30
7.2. General enumerations.....	30
7.3. CFI Identifiers	32
7.3.1. Introduction	32
7.3.2. Function Description	34

7.3.2.1. <i>xx_<function>_init_status</i>	35
7.3.2.2. <i>xx_<function>_get_sat_id</i>	35
7.3.2.3. <i>xx_<function>_get_mode</i>	36
7.3.3. Grouping CFI Identifiers	37
7.4. Runtime Performances	38
7.5. Checking library integrity	38
7.5.1. <i>xx_check_library_version</i> function	38
7.5.2. <i>expcfi_check_libs</i> executable program	39
8. ERROR HANDLING.....	40
8.1. Functions producing an Output Status Vector	40
8.2. Functions returning an Extended Status Flag.....	40
8.3. Testing the Returned Status.....	41
8.4. Retrieving Errors and Warnings.....	41
8.5. <i>xx_silent</i>	43
8.5.1. Overview	43
8.5.2. Calling Interface	43
8.5.3. Input Parameters	43
8.5.4. Output Parameters	43
8.6. <i>xx_verbose</i>	44
8.6.1. Overview	44
8.6.2. Calling Interface	44
8.6.3. Input Parameters	44
8.6.4. Output Parameters	44
8.7. <i>xx_get_code</i>	45
8.7.1. Overview	45
8.7.2. Calling Interface	45
8.7.3. Input Parameters	46
8.7.4. Output Parameters	46
8.8. <i>xx_get_msg</i>	47
8.8.1. Overview	47
8.8.2. Calling Interface	47
8.8.3. Input Parameters	48
8.8.4. Output Parameters	48
8.9. <i>xx_print_msg</i>	49
8.9.1. Overview	49
8.9.2. Calling Interface	49
8.9.3. Input Parameters	49
8.9.4. Output Parameters	49
9. KNOWN PROBLEMS.....	50

List of Tables

Table 1:	General purpose enumerations.....	30
Table 2:	CFI Identifiers.....	33
Table 3:	Input parameters of xx_<function>_init_status.....	35
Table 4:	Output parameters of xx_<function>_init_status function.....	35
Table 5:	Input parameters of xx_<function>_get_sat_id.....	36
Table 6:	Output parameters of xx_<function>_get_sat_id function.....	36
Table 7:	Input parameters of xx_<function>_get_mode.....	37
Table 8:	Output parameters of xx_<function>_get_mode function.....	37
Table 9:	Output parameters of xx_silent function.....	43
Table 10:	Output parameters of xx_verbose function.....	44
Table 11:	Output parameters of xx_get_code function.....	46
Table 12:	Output parameters of xx_get_code function.....	46
Table 13:	Input parameters of xx_get_msg function.....	48
Table 14:	Output parameters of xx_get_msg function.....	48
Table 15:	Input parameters of xx_print_msg function.....	49
Table 16:	Output parameters of xx_print_msg function.....	49
Table 17:	Known problems list.....	50

List of Figures

- Figure 1: Earth Explorer CFI software libraries 13
- Figure 2: Earth Explorer CFI Software libraries dependencies 15
- Figure 3: EXPLORER_ORBIT, POINTING and VISIBILITY data flow 16
- Figure 4: EXPLORER_GEO_CORRECTIONS data flow 16
- Figure 5: EXPLORER_RETRACKER data flow 17
- Figure 6: CFI directories structure 26
- Figure 7: Hierarchical structure of the initialisation variables in the CFI. 34



Code: EE-MA-DMS-GS-0002
Date: 31/07/08
Issue: 3.7.2
Page: 8

This page is intentionally left blank

1 SCOPE

The Software User Manual (SUM) of the Earth Explorer Mission CFI Software is composed of:

- General document describing the sections common to all the CFI software libraries.
- Specific document for each of those libraries.

This document is the **General Software User Manual**. It provides an overview of the CFI libraries and describes the software aspects that are common to all those libraries.

The following specific SUM's are also available:

- EXPLORER_LIB Software User Manual, Issue 3.7.2 ([XL_SUM])
- EXPLORER_ORBIT Software User Manual, Issue 3.7.2 ([XO_SUM])
- EXPLORER_POINTING Software User Manual, Issue 3.7.2 ([XP_SUM])
- EXPLORER_VISIBILITY Software User Manual, Issue 3.7.2 ([XV_SUM])
- EXPLORER_FILE_HANDLING Software User Manual, Issue 3.7.2 ([XF_SUM])
- EXPLORER_DATA_HANDLING Software User Manual, Issue 3.7.2 ([XD_SUM])
- EXPLORER_GEO_CORRECTIONS Software User Manual, Issue 1.2 ([XC_SUM])
- EXPLORER_RETRACKER Software User Manual, Issue 1.1 ([XT_SUM])

2 ACRONYMS AND NOMENCLATURE

2.1 Acronyms

ANX	Ascending Node Crossing
CFI	Customer Furnished Item
ESA	European Space Agency
ESTEC	European Space Technology and Research Centre
RAM	Random Access Memory
SUM	Software User Manual

2.2 Nomenclature

<i>CFI</i>	A group of CFI functions, and related software and documentation. that will be distributed by ESA to the users as an independent unit
<i>CFI function</i>	A single function within a CFI that can be called by the user
<i>Library</i>	A software library containing all the CFI functions included within a CFI plus the supporting functions used by those CFI functions (transparently to the user)

3 APPLICABLE AND REFERENCE DOCUMENTS

3.1 Reference Documents

[MCD]	Earth Explorer Mission CFI Software. Mission Conventions Document. CS-MA-DMS-GS-0001. Issue 1.3 15/07/03.
[XL_SUM]	Earth Explorer Mission CFI Software. EXPLORER_LIB Software User Manual. EE-MA-DMS-GS-0003. Issue 3.7.2. 31/07/08.
[XO_SUM]	Earth Explorer Mission CFI Software. EXPLORER_ORBIT Software User Manual. EE-MA-DMS-GS-0004. Issue 3.7.2. 31/07/08.
[XP_SUM]	Earth Explorer Mission CFI Software. EXPLORER_POINTING Software User Manual. EE-MA-DMS-GS-0005. Issue 3.7.2. 31/07/08.
[XV_SUM]	Earth Explorer Mission CFI Software. EXPLORER_VISIBILITY Software User Manual. EE-MA-DMS-GS-0006. Issue 3.7.2. 31/07/08.
[XF_SUM]	Earth Explorer Mission CFI Software. EXPLORER_FILE_HANDLING Software User Manual. EE-MA-DMS-GS-0008. Issue 3.7.2. 31/07/08.
[XD_SUM]	Earth Explorer Mission CFI Software. EXPLORER_DATA_HANDLING Software User Manual. EE-MA-DMS-GS-0007. Issue 3.7.2. 31/07/08.
[XC_SUM]	Earth Explorer Mission CFI Software. EXPLORER_GEO_CORRECTIONS Software User Manual. Issue 1.2. 09/08/01.
[XT_SUM]	Earth Explorer Mission CFI Software. EXPLORER_RETRACKER Software User Manual. Issue 1.1. 04/09/01.

4 INTRODUCTION

This *General Software User Manual* consists of the following sections:

- Introduction explaining how to use this document (section 4)
- Overview of the CFI libraries (section 5), indicating the CFI functions available within each of the CFI software libraries, and the data and control flow between those libraries.
- Installation guide (section Figure 4:), explaining how to get, install and validate any of the CFI software libraries, as well as listing the software items provided with the delivery of the related CFI.
- Library usage overview (section 7), describing how to create a user application
- Detailed description of the error handling functions which are delivered with each CFI. This is described in this document because all CFIs use exactly the same error handling mechanism

The *specific Software User Manual* of each CFI software library ([XL_SUM], [XO_SUM], [XP_SUM], [XV_SUM], [XF_SUM], [XD_SUM], [XC_SUM] and [XT_SUM]) describes in detail the use of each of the CFI functions included within that library, as well as refine the description regarding how to use that library.

In addition to the general and specific SUM for a CFI library, the user must refer to the *Mission Conventions Document* ([MCD]) for details on the time references and formats, reference frames, parameters and models used in all these software user manuals.

5 CFI LIBRARIES OVERVIEW

The Earth Explorer Mission CFI Software is a collection of software functions performing accurate computations of mission related parameters for Earth Explorer missions.

Those functions are delivered in the form of software libraries gathering together the functions that share similar functionalities.

An overview of the complete CFI software collection is presented in figure 1.

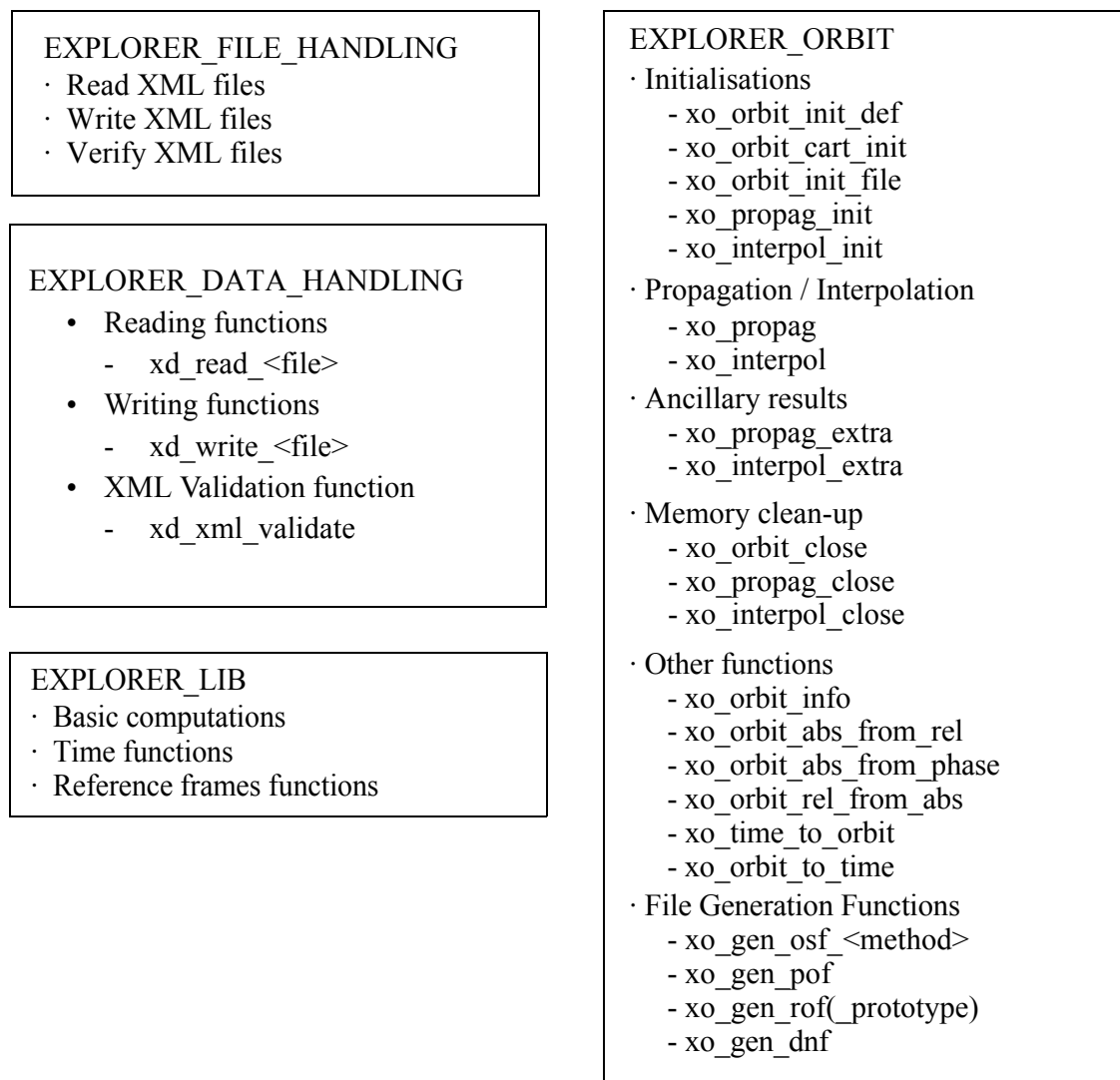


Figure 1: Earth Explorer CFI software libraries

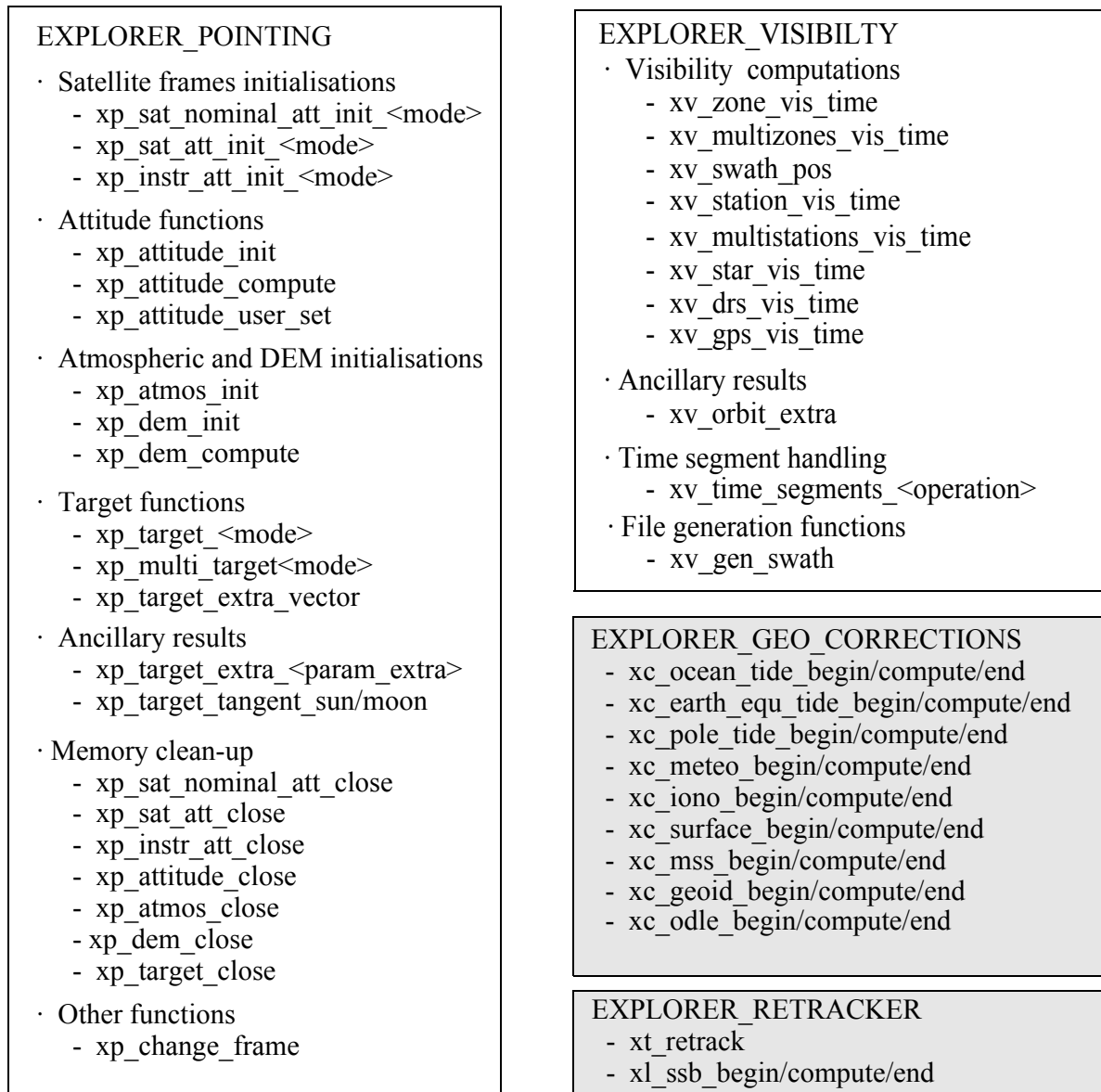


Figure 1: Earth Explorer CFI software libraries

Those libraries aimed to instrument processing appear shadowed in the previous diagram.

The CFI software libraries are to be seen as several layers, each layer being directly accessible to a user's program. Lower layers are more generic functions which are likely to be used by most application software, whereas higher level layers are more specialized functions which are to be used for more specific tasks.

figure 2 shows the software dependencies between the CFI software libraries, where each row between libraries indicates that the higher level library requires the lower level one to operate.

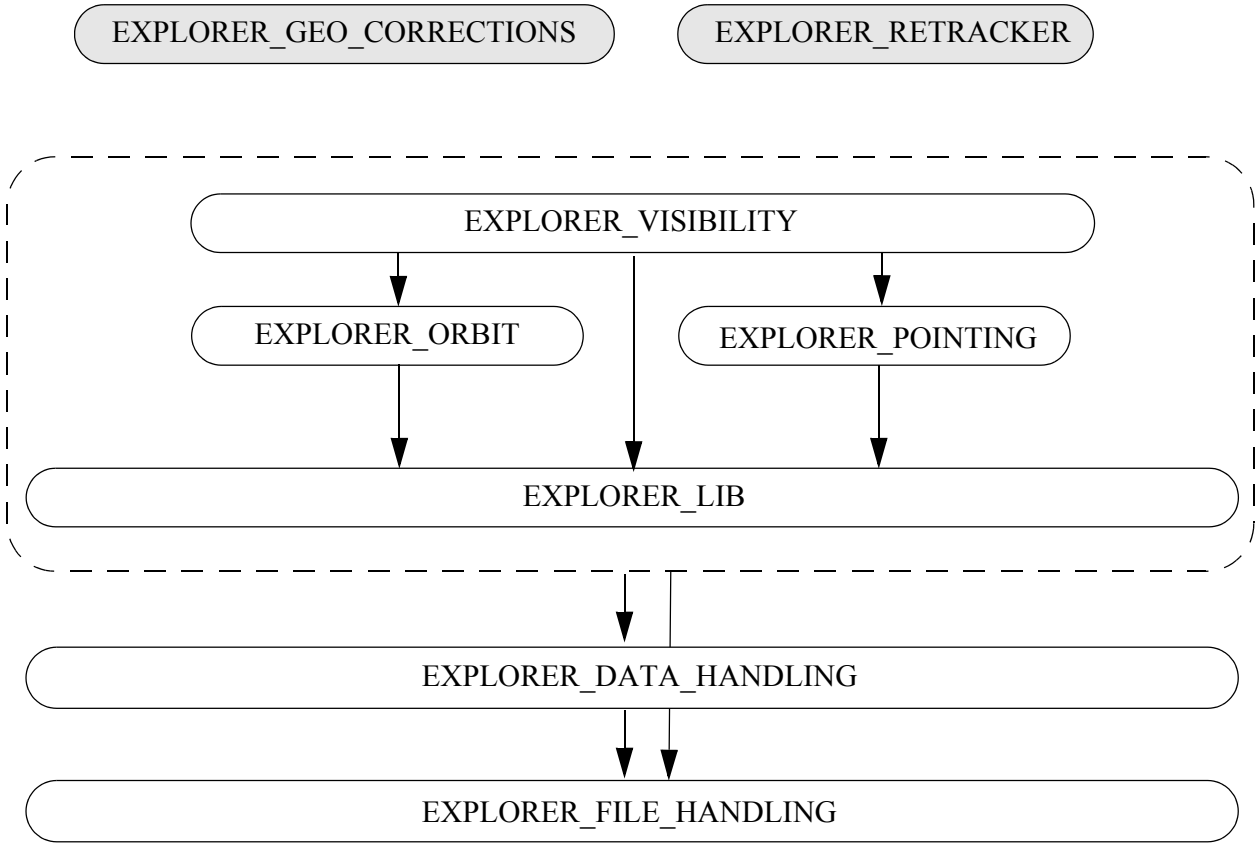


Figure 2: Earth Explorer CFI Software libraries dependencies

Furthermore, the high level data flow between those CFI libraries are shown in figure 3:

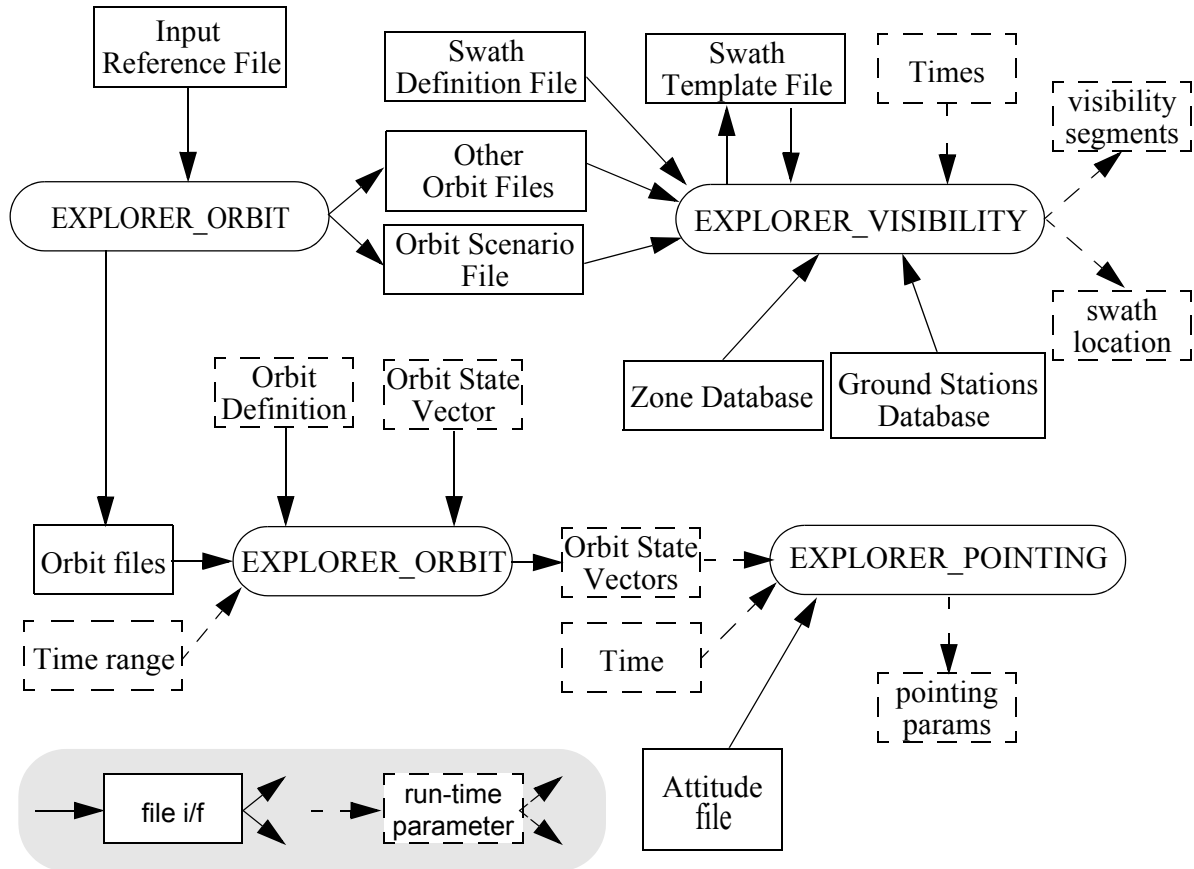


Figure 3: EXPLORER_ORBIT, POINTING and VISIBILITY data flow

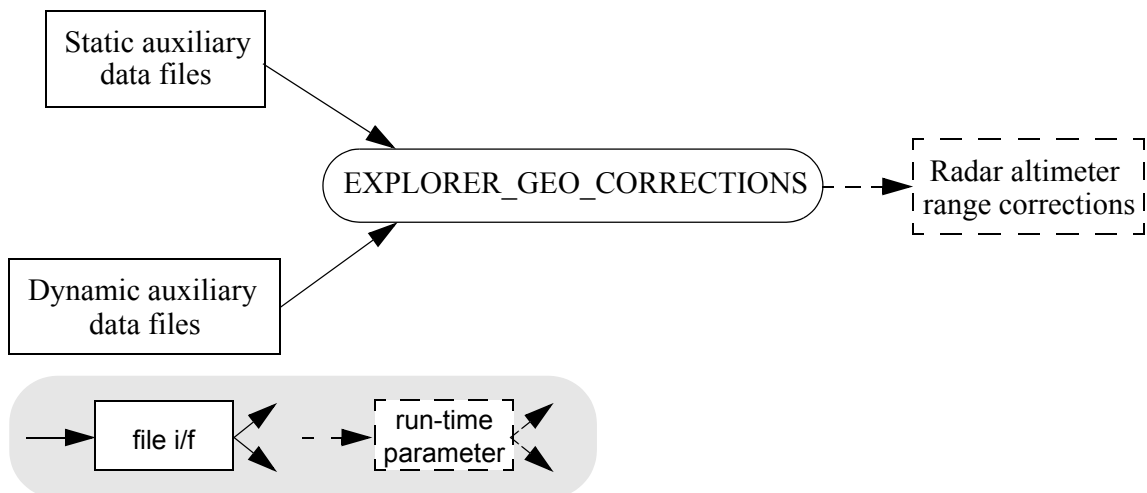


Figure 4: EXPLORER_GEO_CORRECTIONS data flow

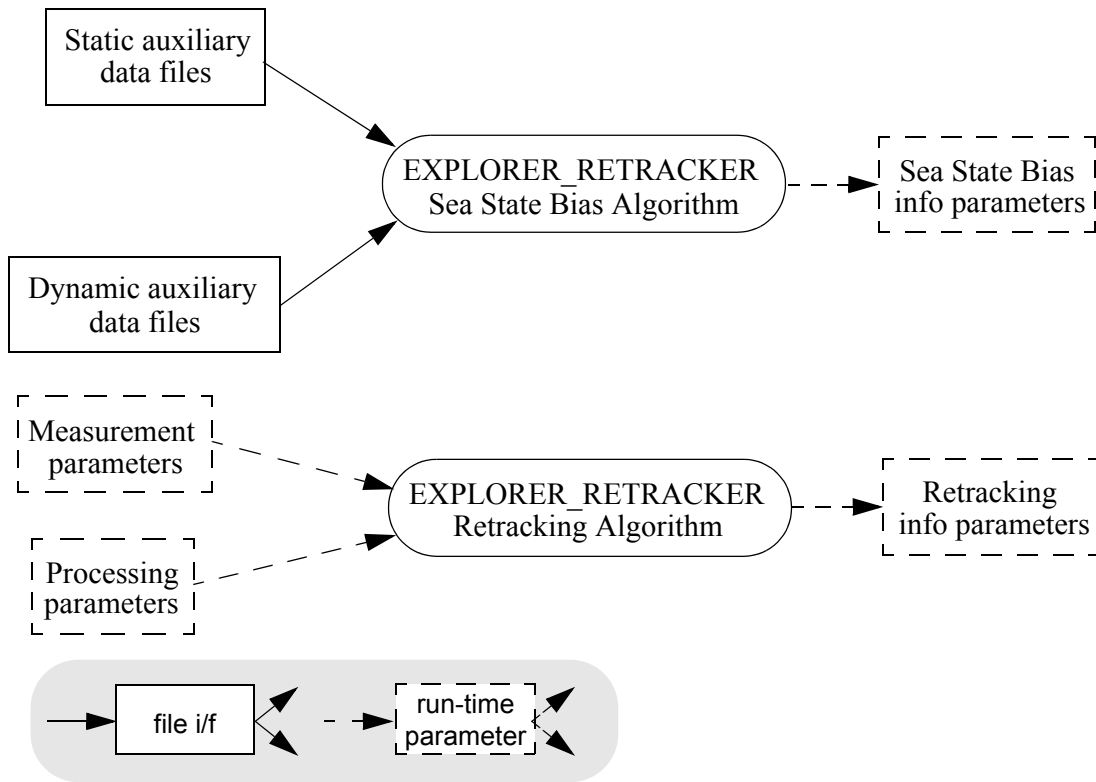


Figure 5: EXPLORER_RETRACKER data flow

6 CFI LIBRARIES INSTALLATION

This section describes the procedures to get, install and validate the installation of a CFI software library. It also describes the directory structure and available files resulting from a successful installation.

These procedures and structures are the same for each of the available CFI software libraries and so, they will be described in this document for a generic CFI, namely *cfi_name*. To perform an actual installation, please follow the procedures while replacing *cfi_name* with the appropriate name, i.e. one of:

- `explorer_file_handling`
- `explorer_data_handling`
- `explorer_lib`
- `explorer_orbit`
- `explorer_pointing`
- `explorer_visibility`
- `explorer_geo_corrections`
- `explorer_retracker`

6.1 Usage Requirements

Each CFI software library is distributed as an object code callable from C, C++ and ForTran, The object code is completely system dependent. In this sense, different computer platforms are supported:

- Sun under Solaris (32-bits and 64-bits platforms)
- PC under Windows 95/98/NT/2000
- PC under Linux (32-bits and 64-bits platforms)
- Macintosh under MacOS X (32-bits and 64-bits platforms)
- Macintosh with Intel processor under MacOS X (32-bits and 64-bits platforms)

Some of the libraries are not available for all operative systems. In this sense, the following table presents the correspondence between software libraries and operative systems.

CFI Libraries	<code>explorer_file_handling</code>	<code>explorer_data_handling</code>	<code>explorer_lib</code>	<code>explorer_orbit</code>	<code>explorer_pointing</code>	<code>explorer_visibility</code>	<code>explorer_geo_corrections</code>	<code>explorer_retracker</code>
Solaris 32-bits	X	X	X	X	X	X	X	X
Solaris 64-bits	X	X	X	X	X	X	-	-
Windows 32-bits	X	X	X	X	X	X	-	-

CFI Libraries	explorer_file_handling	explorer_data_handling	explorer_lib	explorer_orbit	explorer_pointing	explorer_visibility	explorer_geo_corrections	explorer_retracker
Linux 32-bits	X	X	X	X	X	X	X	X
Linux 64-bits	X	X	X	X	X	X	-	-
MacOS X 32-bits	X	X	X	X	X	X	-	-
MacOS X 64-bits	X	X	X	X	X	X	-	-
MacOS X on Intel 32-bits	X	X	X	X	X	X	-	-
MacOS X on Intel 64-bits	X	X	X	X	X	X	-	-

In order to enable the use of the libraries in C++, the following syntax is used within the headers:

```

#ifdef __cplusplus
extern "C" {
#endif
-----prototyping
-----prototyping
#ifdef __cplusplus
}
#endif
    
```

6.1.1 Sun under Solaris 32-Bits

The source code has been compiled on a Sun SparcStation under Solaris 5.7 and using the free software gcc compiler.

The software requirements for C users are:

- Solaris 5.7 (or later) Operating System

- Solaris 5.7 (or later) *libm.a* (or *libm.so*) mathematical library
- *gcc* compiler version 3.3.2 (for linking the software to a C application)
- *libxml2* version 2.6.22 or later
- *libpthread.so*: POSIX thread library

For Fortran users, the following software is needed:

- *gfortran* compiler version 4.2.0 (for linking the software to a fortran application)
- *libgfortran*, *libgcc_s*, *libgfortranbegin*

The hardware requirements are:

- Sun SparcStation
- TBD Mb free of disk space (for FILE_HANDLING, DATA_HANDLING, LIB, ORBIT, POINTING and VISIBILITY libraries)
- TBD Mb RAM (for FILE_HANDLING, DATA_HANDLING, LIB, ORBIT, POINTING and VISIBILITY libraries)

6.1.2 Sun under Solaris 64-Bits

The source code has been compiled on a Sun SparcStation under Solaris 5.9 and using the free software *gcc* compiler.

The software requirements for C users are:

- Solaris 5.9 (or later) Operating System
- Solaris 5.9 (or later) *libm.a* (or *libm.so*) mathematical library
- *gcc* compiler version 3.4.2 (for linking the software to a C application)
- *libxml2* version 2.4.23 or later
- *libpthread.so*: POSIX thread library

For Fortran users, the following software is needed:

- *gfortran* compiler version 4.2.0 (for linking the software to a fortran application)
- *libgfortran*, *libgcc_s*, *libgfortranbegin*

The hardware requirements are:

- Sun SparcStation
- TBD Mb free of disk space (for FILE_HANDLING, DATA_HANDLING, LIB, ORBIT, POINTING and VISIBILITY libraries)
- TBD Mb RAM (for FILE_HANDLING, DATA_HANDLING, LIB, ORBIT, POINTING and VISIBILITY libraries)

6.1.3 PC under Windows 95/98/NT/2000

The source code has been compiled on a PC under Microsoft Windows 2000 and using the software *Microsoft Visual C++ 6.0* compiler.

In summary, the software requirements for C users are:

- Microsoft Windows 2000 Operating System.
- *Microsoft Visual C++ 6.0* Compiler (for linking the software to a C application)
- *libxml2* version 2.6.20 or later (including *iconv-1.9.1* and *zlib-1.2.3*)
- *pthread.lib*: POSIX thread library

For Fortran users, the following software is needed:

- gfortran compiler version 4.2.0 (for linking the software to a fortran application)
- libgfortran, libgcc_s, libgfortranbegin

The hardware requirements are:

- PC
- TBD Mb free of disk space (for FILE_HANDLING, DATA_HANDLING, LIB, ORBIT, POINTING and VISIBILITY libraries)
- TBD Mb RAM (for FILE_HANDLING, DATA_HANDLING, LIB, ORBIT, POINTING and VISIBILITY libraries)

6.1.4 PC under Linux 32-Bits

The source code has been compiled on a PC under Linux 2.4.18 (RedHat 8.0) and using the free software *gcc* compiler version 3.3.1.

In summary, the software requirements for C users are:

- Linux 2.4.18 (RedHat 8.0)
- *gcc* compiler version 3.3.1 (for linking the software to a C application)
- *libxml2* version 2.6.22 or later
- libpthread.so: POSIX thread library
- glibc 2.3.2

For Fortran users, the following software is needed:

- gfortran compiler version 4.2.0 (for linking the software to a fortran application)
- libgfortran, libgcc_s, libgfortranbegin

The hardware requirements are:

- PC
- TBD Mb free of disk space (for FILE_HANDLING, DATA_HANDLING, LIB, ORBIT, POINTING and VISIBILITY libraries)
- TBD Mb RAM (for FILE_HANDLING, DATA_HANDLING, LIB, ORBIT, POINTING and VISIBILITY libraries)

6.1.5 PC under Linux 64-Bits

The source code has been compiled on a PC under Linux 2.6.9.34 (RedHat Enterprise 4) and using the free software *gcc* compiler version 3.4.5.

In summary, the software requirements for C users are:

- Linux 2.6.9-34 (RedHat Enterprise 4)
- *gcc* compiler version 3.4.6 (for linking the software to a C application)
- *libxml2* version 2.6.16 or later
- libpthread.so: POSIX thread library
- glibc 2.3.4

For Fortran users, the following software is needed:

- gfortran compiler version 4.2.0 (for linking the software to a fortran application)
- libgfortran, libgcc_s, libgfortranbegin

The hardware requirements are:

- PC
- TBD Mb free of disk space (for FILE_HANDLING, DATA_HANDLING, LIB, ORBIT, POINTING and VISIBILITY libraries)
- TBD Mb RAM (for FILE_HANDLING, DATA_HANDLING, LIB, ORBIT, POINTING and VISIBILITY libraries)

6.1.6 Macintosh under MacOS X 32-Bits

The source code has been compiled on a Macintosh (Power PC G4) under MacOS X and using gcc 3.3 compiler.

In summary, the software requirements for C users are:

- Mac OS X version 10.3.9 or later
- gcc compiler version 3.3 (for linking the software to a C application)
- libxml2 version 2.6.22. It is not possible to run the executable programs (such as the file generation executables) linking with a libxml version different from the version used to build those executables.
- libpthread.so: POSIX thread library

For Fortran users, the following software is needed:

- gfortran compiler version 4.2.0 (for linking the software to a fortran application)
- libgfortran, libgcc_s, libgfortranbegin

The hardware requirements are:

- Macintosh
- TBD Mb free of disk space (for FILE_HANDLING, DATA_HANDLING, LIB, ORBIT, POINTING and VISIBILITY libraries)
- TBD Mb RAM (for FILE_HANDLING, DATA_HANDLING, LIB, ORBIT, POINTING and VISIBILITY libraries)

6.1.7 Macintosh under MacOS X 64-Bits

The source code has been compiled on a Macintosh (Power PC G5) under MacOS X and using gcc 4.0.1 compiler.

In summary, the software requirements for C users are:

- Mac OS X version 10.4.6 or later
- gcc compiler version 4.0.1 (for linking the software to a C application)
- libxml2 version 2.6.22. It is not possible to run the executable programs (such as the file generation executables) linking with a libxml version different from the version used to build those executables.
- libpthread.so: POSIX thread library

For Fortran users, the following software is needed:

- gfortran compiler version 4.2.0 (for linking the software to a fortran application)
- libgfortran, libgcc_s, libgfortranbegin

The hardware requirements are:

- Macintosh

- TBD Mb free of disk space (for FILE_HANDLING, DATA_HANDLING, LIB, ORBIT, POINTING and VISIBILITY libraries)
- TBD Mb RAM (for FILE_HANDLING, DATA_HANDLING, LIB, ORBIT, POINTING and VISIBILITY libraries)

6.1.8 Macintosh with Intel processor under MacOS X 32-Bits

The source code has been compiled on a Macintosh (MacBook2,1) with an Intel processor under MacOS X and using the gcc compiler.

In summary, the software requirements for C users are:

- Mac OS X version 10.4.9 or later
- gcc compiler version 4.0.1 (for linking the software to a C application)
- libxml2 version 2.6.16. It is not possible to run the executable programs (such as the file generation executables) linking with a libxml version different from the version used to build those executables.
- libpthread.so: POSIX thread library

The hardware requirements are:

- Macintosh with Intel Processor
- TBD Mb free of disk space (for FILE_HANDLING, DATA_HANDLING, LIB, ORBIT, POINTING and VISIBILITY libraries)
- TBD Mb RAM (for FILE_HANDLING, DATA_HANDLING, LIB, ORBIT, POINTING and VISIBILITY libraries)

6.1.9 Macintosh with Intel processor under MacOS X 64-Bits

The source code has been compiled on a Macintosh (MacBook2,1) with an Intel processor under MacOS X and using the gcc compiler.

In summary, the software requirements for C users are:

- Mac OS X version 10.4.9 or later
- gcc compiler version 4.0.1 (for linking the software to a C application)
- libxml2 version 2.6.22. It is not possible to run the executable programs (such as the file generation executables) linking with a libxml version different from the version used to build those executables.
- libpthread.so: POSIX thread library

The hardware requirements are:

- Macintosh with Intel Processor
- TBD Mb free of disk space (for FILE_HANDLING, DATA_HANDLING, LIB, ORBIT, POINTING and VISIBILITY libraries)
- TBD Mb RAM (for FILE_HANDLING, DATA_HANDLING, LIB, ORBIT, POINTING and VISIBILITY libraries)

6.2 How to get the Software

The CFI software can be downloaded from the ESA EOP System Support Division Web Server:

<http://eop-cfi.esa.int> (main page)

From there, just follow the links until you reach the Envisat CFI page:

http://eop-cfi.esa.int/CFI/ee_cfi_software.html

Follow the instructions given on the page and you will be able to save the distribution file(s) on your local disk.

6.3 How to install the Software

The installation procedure details are described in the Release Note that can be found in the ESA EOP System Support Division Web Server:

<http://eop-cfi.esa.int> (main page)

6.4 Overview of Files and Directory Structure

Upon completion the installation procedure, the following directory structure will be created.

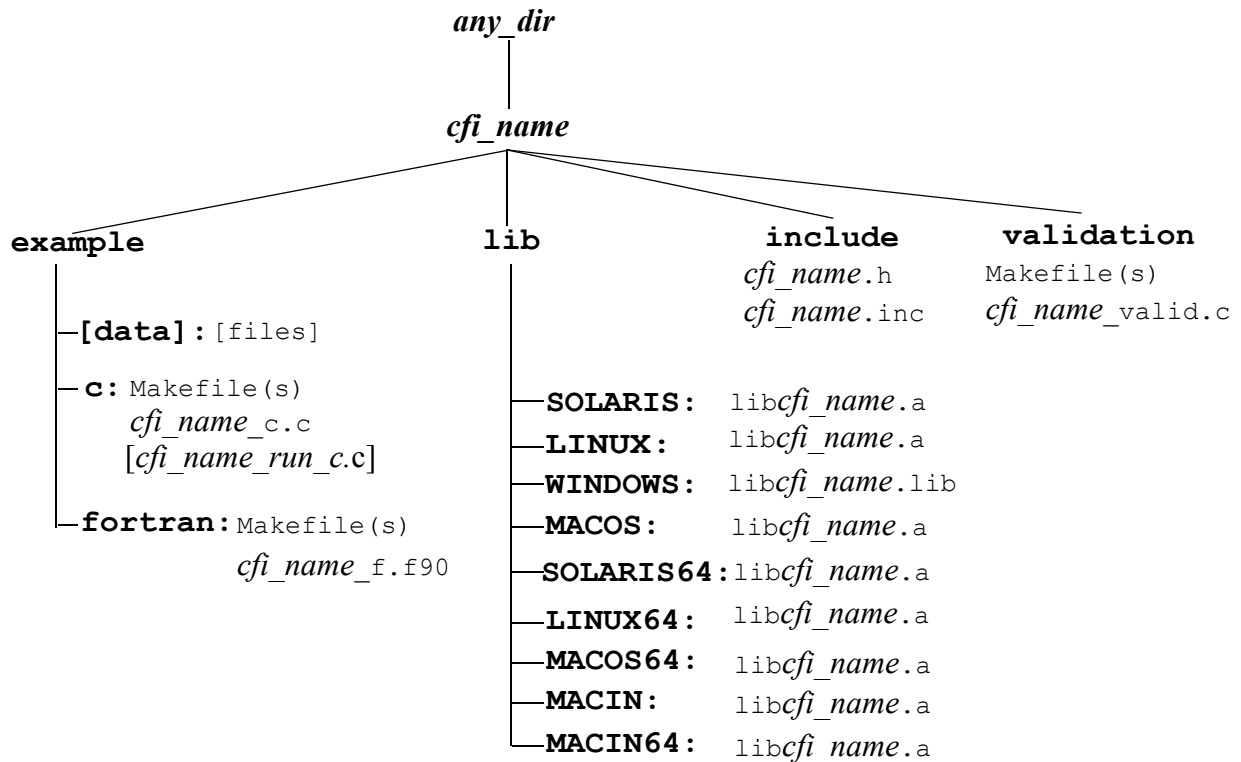


Figure 6: CFI directories structure

Makefile shall be chosen for the appropriate platform.

6.4.1 General Documents

The following PDF files are available:

- mcdX.X.pdf: Mission Conventions Document.
- GeneralSum_X.X.pdf: General Software User Manual.
- Release_Notes_VX.X.pdf: Release Notes detailing the changes and/or corrections introduced in the new release.

These are relevant to all CFIs, and must be moved manually to the directory of your choice.

6.4.2 Directory: *cfi_name/lib*

This directory contains the CFI object libraries. There are one file per supported computer platform, each in a separate sub-directory:

- **SOLARIS**/*libcfi_name.a*: for Sun/SOLARIS 32-bits users.
- **WINDOWS**/*libcfi_name.lib*: for PC/Windows users.
- **LINUX**/*libcfi_name.a*: for PC/Linux 32-bits users.
- **MACOS**/*libcfi_name.a*: for Macintosh/MacOS X 32-bits users.
- **SOLARIS64**/*libcfi_name.a*: for Sun/SOLARIS 64-bits users.
- **LINUX64**/*libcfi_name.a*: for PC/Linux 64-bits users.
- **MACOS64**/*libcfi_name.a*: for Macintosh/MacOS X 64-bits users.
- **MACIN**/*libcfi_name.a*: for Macintosh Intel/MacOS X 32-bits users.
- **MACIN64**/*libcfi_name.a*: for Macintosh Intel/MacOS X 64-bits users.

6.4.3 Directory: *cfi_name/include*

This directory contains the include files with the function declaration for every CFI function, plus the related enumerations:

- *cfi_name.h*: for C users.
- *cfi_name.inc*: for Fortran users under Solaris/AIX/Linux/MacOS platform.

6.4.4 Directory: *cfi_name/validation*

This directory contains the validation program and associated makefile:

- *cfi_name_valid.c*
- makefile files for the different allowed operative systems, i.e. Solaris, Windows 95/98/NT/2000, Linux and MacOS.

Depending on the CFI, input data files used by the validation program may be included. In such a case they can be found in the directory **example/data**. After running the validation procedure (section 6.5), other files appear.

- *cfi_name_valid* (or *cfi_name_valid.exe* for Windows)
- *cfi_name_valid.OS.out* (*OS* stands for the different allowed operative systems)
- other output files depending on the library.

6.4.5 Directory: *cfi_name/example*

This directory contains example programs and associated makefiles. There is 1 file per supported computer platform, each in a separate sub-directory:

- *c/cfi_name_c.c*: for C users
- makefile files for the different allowed operative systems, i.e. Solaris, Windows 95/98/NT/2000.
- data files used for the validation and example drivers.

Depending on the CFI, example data files to be used with the CFI may be included in a separate **data** sub-directory.

6.5 Validation Procedure

This procedure should be run to verify the proper installation of the CFI library:

1. Go to directory `cfi_name/validation`
2. Edit the makefile for your platform and configure it to your installation. The configuration parameters are all located at the top of the `Makefile`, with instructions on how to use them.
3. Note in particular that if the CFI requires to link with other CFIs, you will have to specify the location of those other CFI libraries. If, when installing those other CFIs, you always followed the advice given below in section 6.3, this will be easier (as all already installed include files will be grouped in one directory, and all already installed libraries as well).
4. Run the validation program using

```
make -f make.OS where OS stands for the different allowed operative systems.
```

The validation program is created, executed and a validation status message printed. The message should look like:

```
cfi_name: ... CFI LIBRARY INSTALLATION = OK
```

or:

```
cfi_name: ... CFI LIBRARY INSTALLATION = FAILED !!!
```

In the latter case, check again your installation, and run the validation program again if necessary. If the message persists, report the problem (see section 6.7).

During the execution of the validation program a log file `cfi_name valid.OS.out` (*OS* stands for the different allowed operative systems) is also created. It can be consulted for a detailed listing of the validation run.

6.6 Examples

Three examples are provided to illustrate how the interface with the CFI functions contained in the CFI software library works with both C and Fortran, and in particular how to handle the returned errors. Proper usage of error handling and enumerations is systematically shown for each function.

Note that for C, two examples are provided. The first one is called `explorer_xxx_c.c` and the second one `explorer_xxx_run_c.c`. Both examples are similar, except for the fact that the “_run” example follows an alternative way for calling to CFI functions that uses the “run_id” variable (see section 7.3 for further details about this alternative method). The makefiles used to compile the two examples are:

- `make.OS` for running the `explorer_xxx_c.c`
- `makerun.OS` for running the `explorer_xxx_run_c.c`

where *OS* stands for the different allowed operative systems.

The examples should be self-explanatory. To use them, use the same procedure as for the validation program.

In a user application, the same conventions to compile and link as in the example makefiles should be followed.

Note that the examples can be used with either the static linking of the dynamic linking version of the library. To select which version, use the configuration of the Makefile (this should be self-explanatory).

Note, in particular, that when using dynamic linking libraries, proper setting of the environment must be performed at run-time. This means:

- SOLARIS/Linux/MacOS: adding to the `LD_LIBRARY_PATH` environment variable the locations of all dynamic libraries needed.

-
- Windows 95/98/NT/2000: adding to the `PATH` environment variable the locations of all dynamic libraries needed.

It is advised to consult your manuals for proper usage of dynamic linking libraries.

6.7 Problems Reporting

For any problems or questions, please send an e-mail to: cfi@jw.estec.esa.nl

7 CFI LIBRARIES USAGE

7.1 Using CFI's in a user application

To use CFIs in an application, the user must:

- include the header files provided with the CFIs (one header file per CFI)
- link the application with the CFI libraries (one library per CFI)

To avoid any naming conflicts with the user application all the software items in the CFI libraries are prefixed either `XX_` or `xx_`. `xx_` stands for the initials of the name of the CFI software library, i.e.:

- `xl_` and `XL_` for EXPLORER_LIB
- `xo_` and `XO_` for EXPLORER_ORBIT
- `xp_` and `XP_` for EXPLORER_POINTING
- `xv_` and `XV_` for EXPLORER_VISIBILITY
- `xf_` and `XF_` for EXPLORER_FILE_HANDLING
- `xd_` and `XD_` for EXPLORER_DATA_HANDLING
- `xc_` and `XC_` for EXPLORER_GEO_CORRECTIONS
- `xt_` and `XT_` for EXPLORER_RETRACKER

The user should avoid naming software items in the application with any of the above prefixes.

Details can be found in the specific Software User Manuals of each CFI ([`XL_SUM`], [`XO_SUM`], [`XP_SUM`], [`XV_SUM`], [`XF_SUM`], [`XD_SUM`], [`XC_SUM`] and [`XT_SUM`]).

7.2 General enumerations

It is possible to use enumeration values rather than integer values for some of the input arguments of the EXPLORER routines, as shown in the table below. The `XX` prefix is generic, that is, it must be replaced by the corresponding library prefix, e. g., `XL` for **explorer_lib**, `XO` for **explorer_orbit**, and so on.

Input/Output	Description	Enumeration value	long
Error handling	An error is returned by the CFI	<code>XX_ERR</code>	-1
	Nominal execution of the CFI	<code>XX_OK</code>	0
	A warning is returned by the CFI	<code>XX_WARN</code>	1
Satellite ID ^a	Default Satellite	<code>XX_SAT_DEFAULT</code>	0
	Default Satellite 1	<code>XX_SAT_DEFAULT1</code>	1
	Default Satellite 2	<code>XX_SAT_DEFAULT2</code>	2
	Default Satellite 3	<code>XX_SAT_DEFAULT3</code>	3
	Default Satellite 4	<code>XX_SAT_DEFAULT4</code>	4
	Default Satellite 5	<code>XX_SAT_DEFAULT5</code>	5
	Default Satellite 6	<code>XX_SAT_DEFAULT6</code>	6
	Default Satellite 7	<code>XX_SAT_DEFAULT7</code>	7
	Default Satellite 8	<code>XX_SAT_DEFAULT8</code>	8

Table 1: General purpose enumerations

Input/Output	Description	Enumeration value	long
	Default Satellite 9	XX_SAT_DEFAULT9	9
	ERS-1	XX_SAT_ERS1	11
	ERS-2	XX_SAT_ERS2	12
	Envisat	XX_SAT_ENVISAT	21
	MetOp-1	XX_SAT_METOP1	31
	MetOp-2	XX_SAT_METOP2	32
	MetOp-3	XX_SAT_METOP3	33
	CryoSat	XX_SAT_CRYOSAT	41
	ADM	XX_SAT_ADM	51
	GOCE	XX_SAT_GOCE	61
	SMOS	XX_SAT_SMOS	71
	Terrasar	XX_SAT_TERRASAR	81
	EarthCARE	XX_SAT_EARTHCARE	91
	Swarm-A	XX_SAT_SWARM_A	101
	Swarm-B	XX_SAT_SWARM_B	102
	Swarm-C	XX_SAT_SWARM_C	103
	Sentinel-1A	XX_SAT_SENTINEL_1A	110
	Sentinel-1B	XX_SAT_SENTINEL_1B	111
	Sentinel-2	XX_SAT_SENTINEL_2	112
	Sentinel-3	XX_SAT_SENTINEL_3	113
	Seosat	XX_SAT_SEOSAT	120
	Generic satellite	XX_SAT_GENERIC	200
Cartesian coordinates	X-coordinate	XX_CART_X	0
	Y-coordinate	XX_CART_Y	1
	Z-coordinate	XX_CART_Z	2
Keplerian elements	Semi-major axis	XX_KEPL_A	0
	Eccentricity	XX_KEPL_E	1
	Inclination	XX_KEPL_I	2
	Right ascension of ascending node	XX_KEPL_RA	3
	Argument of perigee	XX_KEPL_W	4
	Mean anomaly	XX_KEPL_M	5
Time reference	Undefined time reference	XX_TIME_UNDEF	-1
	TAI time reference	XX_TIME_TAI	0
	UTC time reference	XX_TIME_UTC	1
	UT1 time reference	XX_TIME_UT1	2
	GPS time reference	XX_TIME_GPS	3

Table 1: General purpose enumerations

Input/Output	Description	Enumeration value	long
AOCS mode	Geocentric pointing	XX_AOCS_GPM	0
	Local normal pointing	XX_AOCS_LNP	1
	Yaw steering + local normal pointing	XX_AOCS_YSM	2
Time window initialisation	Initialisation from file	XX_SEL_FILE	0
	Initialisation from time	XX_SEL_TIME	1
	Initialisation from absolute orbit number	XX_SEL_ORBIT	2
	Used in xo_propag_init	XX_SEL_DEFAULT	3

Table 1: General purpose enumerations

a. To use a default satellite, it is necessary to initialize the satellite using the `explorer_lib` CFI function `xl_default_sat_init` (see [XL_SUM]).

Whenever available *it is strongly recommended to use enumeration values rather than integer values.*

7.3 CFI Identifiers

7.3.1 Introduction

In most cases, CFI functions need to make use of a certain amount of internal data that characterize the system. The way to provide this data to the functions is a variable (ID) that makes a reference to the needed internal data. This variable is a structure that always contains a pointer to void, independently of the type of data (the reason why a void pointer is used is to prevent users from accessing the internal data directly).

The logical use of an ID in a program is:

1. Declaration of the ID: When declaring the ID variable it is important to set to NULL the pointer that contains. Not doing this, can make the program crash when calling any function that uses the ID.

```
xx_<function>_id ID = {NULL};
```

or

```
xx_<function>_id ID;  
xx_<function>_id.ee_id = NULL;
```

2. Initialize the ID: For this issue, there are functions to initialize the internal data of the type

```
xx_<function>_init ( input_params, ...,  
/* Output */  
&ID);
```

3. Call to the functions using the ID when needed.

```
xx_<function>_<xxx>(&ID, ...)
```

4. Close the ID when it is not needed any more. It is important to close the ID as this operation frees the allocated dynamic memory. This operation is performed with a function of the type

```
xx_<function>_close(&ID, ...)
```


The following table shows the complete set of IDs that exists in the CFI:

ID	Library	Description
sat_id	-	Satellite identifier used for accessing generic satellite data.
xl_time_id	explorer_lib	It stores the time correlations.
xo_orbit_id	explorer_orbit	Orbit data needed for orbit calculations.
xo_propag_id	explorer_orbit	Propagation data needed for the propagation function.
xo_interpol_id	explorer_orbit	Interpolation data needed for the interpolation function.
xp_atmos_id	explorer_pointing	Atmospheric data used in target functions
xp_dem_id	explorer_pointing	It stores the Digital Elevation Model data
xp_sat_nom_trans_id	explorer_pointing	It stores the data relative to the Satellite Nominal Ref. Frame.
xp_sat_att_trans_id	explorer_pointing	It stores the data relative to the Satellite Relative Actual Ref. frame
xp_instr_att_trans_id	explorer_pointing	It stores the data relative to the Instrument Ref. Frame.
xp_attitude_id	explorer_pointing	It stores the the results of the attitude calculation, needed for target calculations.
xp_target_id	explorer_pointing	It stores the results of the target calculation, needed for getting ancillary results

Table 2: CFI Identifiers

Note that the sat_id is not an ID in the same sense as the others, as it is a long value that indicates the satellite, so there is not need to construct it or destroy it.

The IDs in the CFI libraries follow a hierarchical structure, in the sense that some IDs need another IDs in order to be initialised. The figure 7 shows the hierarchy of the IDs in the CFI.

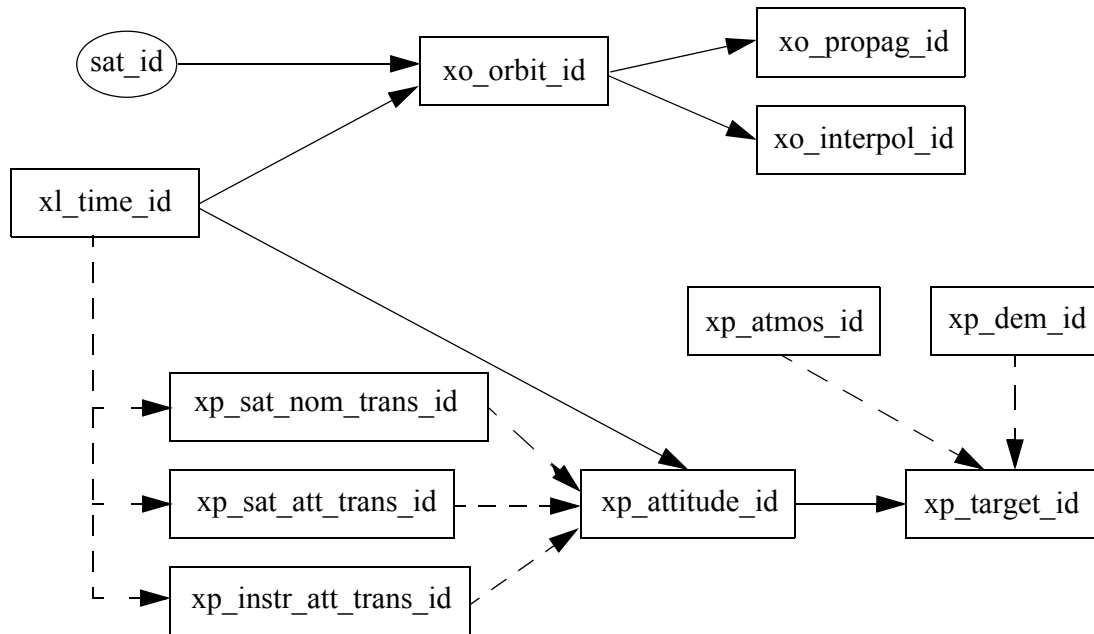
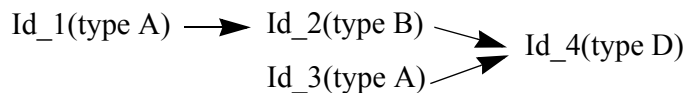


Figure 7: Hierarchical structure of the initialisation variables in the CFI.

In the figure, the plain lines mean the there is a mandatory link between the ids, while the dashed line indicates the second ID can use or not the first ID.

The previous hierarchy must be taken into account when creating and closing IDs. In general the following rules must be kept:

- An ID can be constructed if all the needed IDs are constructed.
- An ID can be closed if it is not being used by another ID. This means that the IDs must be closed in the inverse way in which they were created.
- When creating an ID, the input IDs must be consistent between them. This rule can be clarify with the following schema:



In this case, the Id_4 can only be constructed if the Id_1 and the Id_3 are the same.

- An ID can be used for initialize several IDs. For example a xl_time_id can be used to initialize two variables of the type xo_orbit_id (let's say orbit_id_1 and orbit_id_2). If now the xl_time_id has to be closed, the orbit_id_1 and the orbit_id_2 should be closed first.

7.3.2 Function Description

Each ID have a set of functions for handling the data that it stores. Some of that functions are similar for all IDs and they are presented in the following sections. Other functions are specific for each ID and its

usage has been detailed in the corresponding SUMs.

7.3.2.1 xx <function> init status

7.3.2.1.1 Overview

The `xx_<function>_init_status` allows to know if a CFI function has been initialized.

7.3.2.1.2 Calling Interface

The calling interface of the `xx_<function>_init_status` CFI function is the following (input parameters are underlined):

```
#include <cfi_name.h>
{
    long status;
    xx_<function>_id id = {NULL};
    status = xx_<function>_init_status(&id);
}
```

7.3.2.1.3 Input Parameters

The input parameters of the `xx_<function>_init_status` CFI function are:

C name	C type	Array Element	Description (Reference)	Unit (Format)	Allowed Range
id	xx_<function>_id	-	Initialisation ID	-	-

Table 3: Input parameters of xx_<function>_init_status

7.3.2.1.4 Output Parameters

The output parameters of the `xx_<function>_init_status` CFI function are:

C name	C type	Array Element	Description (Reference)	Unit (Format)	Allowed Range
xx_<function>init_status	long	-	<ul style="list-style-type: none"> • 0 (false) if the input ID is not initialized. • 1 (true) if the input ID is initialized. 	-	-

Table 4: Output parameters of xx_<function>_init_status function

7.3.2.2 xx <function> get sat id

7.3.2.2.1 Overview

The `xx_<function>_get_sat_id` allows to know the satellite for which the ID is used. Note that some IDs are not initialized for a specific satellite, i.e., the ID does not depend on the satellite. In such a case the re-

turned value is -1.

7.3.2.2.2 Calling Interface

The calling interface of the `xx_<function>get_sat_id` CFI function is the following (input parameters are underlined>):

```
#include <cfi_name.h>
{
    long sat_id;
    xx_<function>_id id = {NULL};
    sat_id = xx_<function>_get_sat_id(&id);
}
```

7.3.2.2.3 Input Parameters

The input parameters of the `xx_<function>_get_sat_id` CFI function are:

C name	C type	Array Element	Description (Reference)	Unit (Format)	Allowed Range
id	xx_<function>_id	-	Initialisation ID	-	-

Table 5: Input parameters of xx_<function>_get_sat_id

7.3.2.2.4 Output Parameters

The output parameters of the `xx_<function>_get_sat_id` function are:

C name	C type	Array Element	Description (Reference)	Unit (Format)	Allowed Range
xx_<function>_get_sat_id	long	-	Satellite ID.	-	Returned values according to "Satellite ID" in table 1. -1 if the ID is not linked to any satellite.

Table 6: Output parameters of xx_<function>_get_sat_id function

7.3.2.3 xx_<function>_get_mode

7.3.2.3.1 Overview

The `xx_<function>_get_mode` allows to know the mode attribute of the ID.

7.3.2.3.2 Calling Interface

The calling interface of the `xx_<function>_get_mode` CFI function is the following (input parameters are underlined>):

```
#include <cfi_name.h>
{
    long status;
```

```

xx_<function>_id id = {NULL};

status = xx_<function>_get_mode(&id);
}

```

7.3.2.3.3 Input Parameters

The input parameters of the `xx_<function>_get_mode` CFI function are:

C name	C type	Array Element	Description (Reference)	Unit (Format)	Allowed Range
id	xx_<function>_id	-	Initialisation ID	-	-

Table 7: Input parameters of xx_<function>_get_mode

7.3.2.3.4 Output Parameters

The output parameters of the `xx_<function>_get_mode` function are:

C name	C type	Array Element	Description (Reference)	Unit (Format)	Allowed Range
xx_<function>_get_mode	long	-	Attribute mode for the initialisation ID.	-	-

Table 8: Output parameters of xx_<function>_get_mode function

7.3.3 Grouping CFI Identifiers

As the complexity of the libraries grows, more IDs are needed for the interfaces of the functions. To avoid this, another alternative for calling the CFI functions has been developed. It consists in creating another identifier (`run_id`) that groups several IDs. Then, instead of calling a function that uses the set of IDs as input, another one with the same name and ending with the suffix “_run” is called. This new function uses only the `run_id`.

A `run_id` is constructed incrementally, that is, firstly a `run_id` is created using basic IDs, and then other IDs can be added. When closing the `run_id`, the IDs has to removed firstly in the inverse way to which they were introduced.

Summarizing, the logical sequence for using CFI functions using a `run_id` is as follow:

1. Construct the needed IDs.
2. Create the `run_id`.
3. Add the needed IDs. to the `run_id`
4. Call CFI functions (those ending in “_run”) using the `run_id`.
5. Close the `run_id`.
6. Close IDs.

Finally, the `run_id` can be considered as another ID, so the rules for constructing and closing IDs, are also applicable.

7.4 Runtime Performances

The runtime performances depend a lot on the type of machine where the program is run. The performances for the CFI functions have been measured for every function in the following machines (see the other Earth Explorer SUMs for details):

- **SOLARIS 32-bits:** Sun Sparc Station Ultra-60. 2 x 450 MHz.
- **SOLARIS 64-bits:** Sun Work Station Sun-Blade-2500. 1280 MHz.
- **Linux 32-bits:** Pentium III 2 x 803 MHz
- **Linux 64-bits:** Dual Core AMD Opteron. 2 x 2193 MHz.

7.5 Checking library integrity

The Earth Explorer CFI provides two methods (functions and executable programs) for checking the compatibility of the libraries that are defined in the following subsections:

7.5.1 *xx_check_library_version* function

Every library in the EXCFI contains a function called **xx_check_library_version** that allows to know if a set of EXPCFI libraries are compatible between them (**xx_** stands for the suffix of the library as described in section 7.1).

The function checks the versions of the library to which the function belongs and the libraries that it depends on. For example, **xx_check_library_version** will check the compatibility between `explorer_file_handling`, `explorer_data_handling` and `explorer_lib`.

Note also that the libraries checked are those that are used for linking the program that contains the function call.

The calling interface of the **xx_check_library_version** CFI function is the following:

```
#include <cfi_name.h>
{
    long status;
    status = xx_check_library_init_status();
}
```

The functions do not require any input parameters and the only output is the status. This could be:

- status = 0: if the libraries are compatible.
- status = -1: if the libraries are not compatible.

The function also reports in the standard output the library versions and the found incompatibilities (if any).

Finally an alias has been defined for the name of the function called: **expcfi_check_libs**. This alias can be called in the same way than the function:

```
status = expcfi_check_libs();
```

when doing this, the chosen function is the one at the higher level in the dependency tree (see figure 2). In other words, if the program is linked with all the EXPCFI libraries, then it call **xv_check_library_version**, if the program is linked with `explorer_file_handling`, `explorer_data_handling` and `explorer_lib`, then the alias will be a call to **xl_check_library_version**.

The user should be warned that if the program is linked with `explorer_pointing` and `explorer_orbit`, then the alias will call **xp_check_library_version** and then the `explorer_orbit` will not be checked (note that those libraries do not depend on each other)

7.5.2 *expcfi_check_libs* executable program

This executable program can be called from a UNIX shell as follows:

```
expcfi_check_libs [{"-dir| "directory name" (current directory by default)
                  -lib}]"library name" (to get the library version).
                  Compatibility between libraries are not checked)
[-help ]
```

Note that:

- Order of parameters does not matter.
- Bracketed parameters are not mandatory.
- Options between curly brackets and separated by a vertical bar are mutually exclusive.

The executable program checks the compatibility of the libraries that are located in the directory “dir”. For the correct execution of the program it is required that:

- All EXPCFI libraries are located in the directory “dir”.
- The current directory (from which the program is called) has writing permissions.

Important: For WINDOWS OS, this executable program fails if the system cannot find the tool “strings”. This tool is provided freely in a collection of tools called GNU binutils. More information about GNU binutils can be get in: <http://www.gnu.org/software/binutils/>

Examples: Let’s suppose that the libraries are stored in the directory “./expcfi_dir”:

A)

```
expcfi_check_libs -lib ./expcfi_dir/libexplorer_visibility.a
```

The output would be:

```
explorer_visibility version = 3.7
Current version of explorer_visibility is compatible with explorer_file_handling v3.7
Current version of explorer_visibility is compatible with explorer_data_handling v3.7
Current version of explorer_visibility is compatible with explorer_lib v3.7
Current version of explorer_visibility is compatible with explorer_orbit v3.7
Current version of explorer_visibility is compatible with explorer_pointing v3.7
```

B)

```
expcfi_check_libs -dir ./expcfi_dir
```

The output would be:

```
Current Earth Explorer CFI libraries:
-----
explorer_file_handling version = 3.7
explorer_data_handling version = 3.7
explorer_lib version = 3.7
explorer_orbit version = 3.7
explorer_pointing version = 3.7
explorer_visibility version = 3.7
EXPCFI library integrity check = OK
```

8 ERROR HANDLING

Every CFI software library follows the same error handling strategy and have exactly similar error handling functions. For this reason, the detailed description of these error handling can be found below, rather than duplicated in each specific Software User Manual.

In the following description those error handling functions are named with the generic prefix `xx_` (section 7.1).

The common error handling strategy is given below, followed by the detailed description of the error handling functions.

8.1 Functions producing an Output Status Vector

All the CFI functions belonging to the CFI software libraries, except the simpler functions of the EXPLORER_LIB CFI:

- Return a main status flag, named `status` in the code examples below.
- Produce on output a status vector of variable size, named `ierr` in the code examples below, which stores information of the returned errors and warnings.

```
long status, ierr[N];
status = xx_cfi_function(..., ierr);
```

The main status flag can take only the values:

- `XX_OK` (0) NOMINAL
- `XX_WARN` (+1) WARNING
- `XX_ERR` (-1) ERROR

All elements of the status vector may take values:

- Zero if nominal behaviour occurred.
- Positive if one or more warnings and no errors occurred.
- Negative if one or more errors occurred.

8.2 Functions returning an Extended Status Flag

The simpler CFI functions of the EXPLORER_LIB CFI follow a slightly different pattern, returning an extended status flag but not producing a status vector on output, i.e:

```
long ext_status;
ext_status = xx_cfi_function(...);
```

In this case the extended status flag can be:

- Zero if nominal
- Positive if one or more warnings and no errors occurred
- Negative if one or more errors occurred

In other words it is not only 0, +1 or -1.

8.3 Testing the Returned Status

To test the status of a CFI function after calling it, the user application must test for:

- `(status == XX_OK)` to detect nominal execution
- `(status >= XX_WARN)` to detect warnings
- `(status <= XX_ERR)` to detect errors

8.4 Retrieving Errors and Warnings

The errors and warnings are contained in either:

- The status vector for functions which produce it.
- The extended status flag for the simpler functions.

In both cases, the errors and warnings information is coded in an encrypted way. To translate the encrypted data into meaningful information, two error handling functions are provided with each CFI library, i.e:

- `xx_get_code`: to transform either the status vector or the extended status flag to a list of integer values, each one referring to a single warning or error.
- `xx_get_msg`: to transform either the status vector or the extended status flag to a list of error messages, each one referring to a single warning or error.

The possible error codes and messages for each CFI function are detailed in that CFI function description, in the specific Software User Manuals.

Furthermore, the user can set two error handling modes of operation.

By default, no error messages are printed when an error or a warning occurs (*silent* mode). But if the *verbose* mode is set, whenever an error or warning takes place a related error message is sent automatically to the standard error output (`stderr`).

To set the error handling mode, two functions are provided with each CFI software library:

- `xx_silent`: sets the mode to silent for all `xx_`-prefixed functions.
- `xx_verbose`: sets the mode to verbose for all `xx_`-prefixed functions.

The format of an error message returned by the `xx_get_msg` function or printed automatically if the verbose mode is set, is as follows.

It begins with the name of the CFI library containing the function that returned that error or warning (e.g. `EXPLORER_POINTING`) followed by `>>>`.

Next, depending if an error or a warning occurred, `"ERROR in"` or `"WARNING in"` appears followed by the name of the function and an explicative text associated with the error or warning returned.

Examples of error messages are:

```
EXPLORER_ORBIT >>> ERROR in xo_interpol: Wrong time on input
EXPLORER_POINTING >>> WARNING in xp_target_<mode>: Path from satellite to target occulted by the Earth
```

Finally, it is also possible for the user to send to the standard error output (`stderr`) the error messages returned by the `xx_get_msg` function, or even to send his own log messages, by calling the last error han-

dling function provided with each CFI software library:

- `xx_print_msg`: sends to `stderr` a list of messages

The following sections describe each CFI function.

The calling interfaces are described for C users.

Input and output parameters of each CFI function are described in tables, where C programming language syntax is used to specify:

- Parameter types (e.g. long, double)
- Array sizes of N elements (e.g. `param[N]`)
- Array element M (e.g. `[M]`)

8.5 xx_silent

8.5.1 Overview

The **xx_silent** CFI error handling function is used to set the error handling mode of the corresponding CFI to silent (i.e. for all **xx_**-prefixed functions). This is the default error handling mode.

8.5.2 Calling Interface

The calling interface of the **xx_silent** CFI error handling function is the following (input parameters are underlined):

```
#include <cfi_name.h>
{
    long status;

    status = xx_silent();
}
```

8.5.3 Input Parameters

The **xx_silent** CFI error handling function has no input parameters.

8.5.4 Output Parameters

The output parameters of the **xx_silent** CFI error handling function are:

C name	C type	Array Element	Description (Reference)	Unit (Format)	Allowed Range
xx_silent	long	-	Status flag	-	-1, 0, +1

Table 9: Output parameters of xx_silent function

8.6 xx_verbose

8.6.1 Overview

The **xx_verbose** CFI error handling function sets the error handling mode of the corresponding CFI library function to verbose (i.e. for all **xx_**-prefixed functions).

Note that when the verbose mode is on, all warnings from low-level supporting functions become visible, whereas they may be of no relevance in the context of the higher-level CFI function calls made by the user application.

This mode should be reserved for trouble-shooting. To expose the CFI functions errors and warnings, use silent mode and the **xx_print_msg** function (section 8.9).

8.6.2 Calling Interface

The calling interface of the **xx_verbose** CFI error handling function is the following (input parameters are underlined):

```
#include <cfi_name.h>
{
    long status;

    status = xx_verbose();
}
```

8.6.3 Input Parameters

The **xx_verbose** CFI error handling function has no input parameters.

8.6.4 Output Parameters

The output parameters of the **xx_verbose** CFI error handling function are:

C name	C type	Array Element	Description (Reference)	Unit (Format)	Allowed Range
xx_verbose	long	-	Status flag	-	-1, 0, +1

Table 10: Output parameters of xx_verbose function

8.7 xx_get_code

8.7.1 Overview

The **xx_get_code** CFI error handling function transforms the status vector or the extended status flag returned by a CFI function to an equivalent list of error codes.

This list can be used to take appropriate decisions within the user application. All possible error codes for a given CFI function are detailed with that CFI function description.

8.7.2 Calling Interface

The calling interface of the **xx_get_code** CFI error handling function is the following (input parameters are underlined):

```
#include <cfi_name.h>
{
    long func_id, n;
    long ierr[XX_MAX_ERR_VECTOR_LENGTH], ext_status;
    long vec[XX_MAX_COD], status;

    status = xx_get_code(&func_id, ierr, &n, vec);
    status = xx_get_code(&func_id, &ext_status, &n, vec);
}
```

The parameter `length_error_vector` must be set in each case to the length of the status vector returned by the corresponding CFI function (or a larger value).

The `XX_MAX_COD` and `XX_MAX_ERR_VECTOR_LENGTH` constants are defined in the file `cfi_name.h`.

8.7.3 Input Parameters

The `xx_get_code` CFI error handling function has the following input parameters:

C name	C type	Array Element	Description (Reference)	Unit (Format)	Allowed Range
func_id	long *	-	Function ID	-	-
ierr ext_status	long *	-	Status vector Extended status flag	-	-

Table 11: Output parameters of `xx_get_code` function

8.7.4 Output Parameters

The output parameters of the `xx_get_code` CFI error handling function are:

C name	C type	Array Element	Description (Reference)	Unit (Format)	Allowed Range
xx_get_code	long	-	Status flag	-	-1, 0, +1
n	long *	-	Number of error codes	-	≥ 0
vec[XX_MAX_COD]	long	all	Error code numbers	-	-

Table 12: Output parameters of `xx_get_code` function

8.8 xx_get_msg

8.8.1 Overview

The **xx_get_msg** CFI error handling function transforms the status vector or the extended status flag returned by a CFI function to an equivalent list of error messages.

This list can be used to print messages using the **xx_print_msg** function (section 8.9).

8.8.2 Calling Interface

The calling interface of the **xx_get_msg** CFI error handling function is the following (input parameters are underlined):

```
#include <cfi_name.h>
{
    long func_id, n;
    char msg[XX_MAX_COD][XX_MAX_STR];
    long ierr[XX_MAX_ERR_VECTOR_LENGTH], ext_status, status;

    status = xx_get_msg(&func_id, &ierr, &n, msg);
    status = xx_get_msg(&func_id, &ext_status, &n, vec);
}
```

The parameter `length_error_vector` must be set in each case to the length of the status vector returned by the corresponding CFI function (or a larger value)

The `XX_MAX_COD`, `XX_MAX_STRING` and `XX_MAX_ERR_VECTOR_LENGTH` constants are defined in the file `cfi_name.h`

8.8.3 Input Parameters

The `xx_get_msg` CFI error handling function has the following input parameters:

C name	C type	Array Element	Description (Reference)	Unit (Format)	Allowed Range
func_id	long *	-	Function ID	-	-
ierr ext_flag	long *	-	Status vector Extended status flag	-	-

Table 13: Input parameters of `xx_get_msg` function

8.8.4 Output Parameters

The output parameters of the `xx_get_msg` CFI error handling function are:

C name	C type	Array Element	Description (Reference)	Unit (Format)	Allowed Range
xx_get_msg	long	-	Status flag	-	-1, 0, +1
n	long *	-	Number of error codes	-	>= 0
msg [XX_MAX_COD][XX_MAX_STR]	char	all	Error code messages	-	-

Table 14: Output parameters of `xx_get_msg` function

8.9 xx_print_msg

8.9.1 Overview

The `xx_print_msg` CFI error handling function sends a vector of messages to `stderr`.

8.9.2 Calling Interface

The calling interface of the `xx_print_msg` CFI error handling function is the following (input parameters are underlined>):

```
#include <cfi_name.h>
{
    long n;
    char msg[XX_MAX_COD][XX_MAX_STR];
    long status;

    status = xx_print_msg(&n, msg);
}
```

The `XX_MAX_COD` and `XX_MAX_STR` constants are defined in the file `cfi_name.h`

8.9.3 Input Parameters

The `xx_print_msg` CFI error handling function has the following input parameters:

C name	C type	Array Element	Description (Reference)	Unit (Format)	Allowed Range
n	long *	-	Number of error codes	-	>= 0
msg[XX_MAX_COD][XX_MAX_STR]	char	all	Error code message	-	-

Table 15: Input parameters of `xx_print_msg` function

8.9.4 Output Parameters

The output parameters of the `xx_print_msg` CFI error handling function are:

C name	C type	Array Element	Description (Reference)	Unit (Format)	Allowed Range
xx_print_msg	long	-	Status flag	-	-1, 0, +1

Table 16: Output parameters of `xx_print_msg` function

9 KNOWN PROBLEMS

The following precautions shall be taken into account when using the CFI software libraries:

CFI library	Problem	Work around solution
-	-	-

Table 17: Known problems list